



INSPIRING SPACES FOR EXCEPTIONAL EVENTS.

Plan your event with us.

INSPIRING SPACES FOR INNOVATION, CREATIVITY, AND TECHNOLOGY

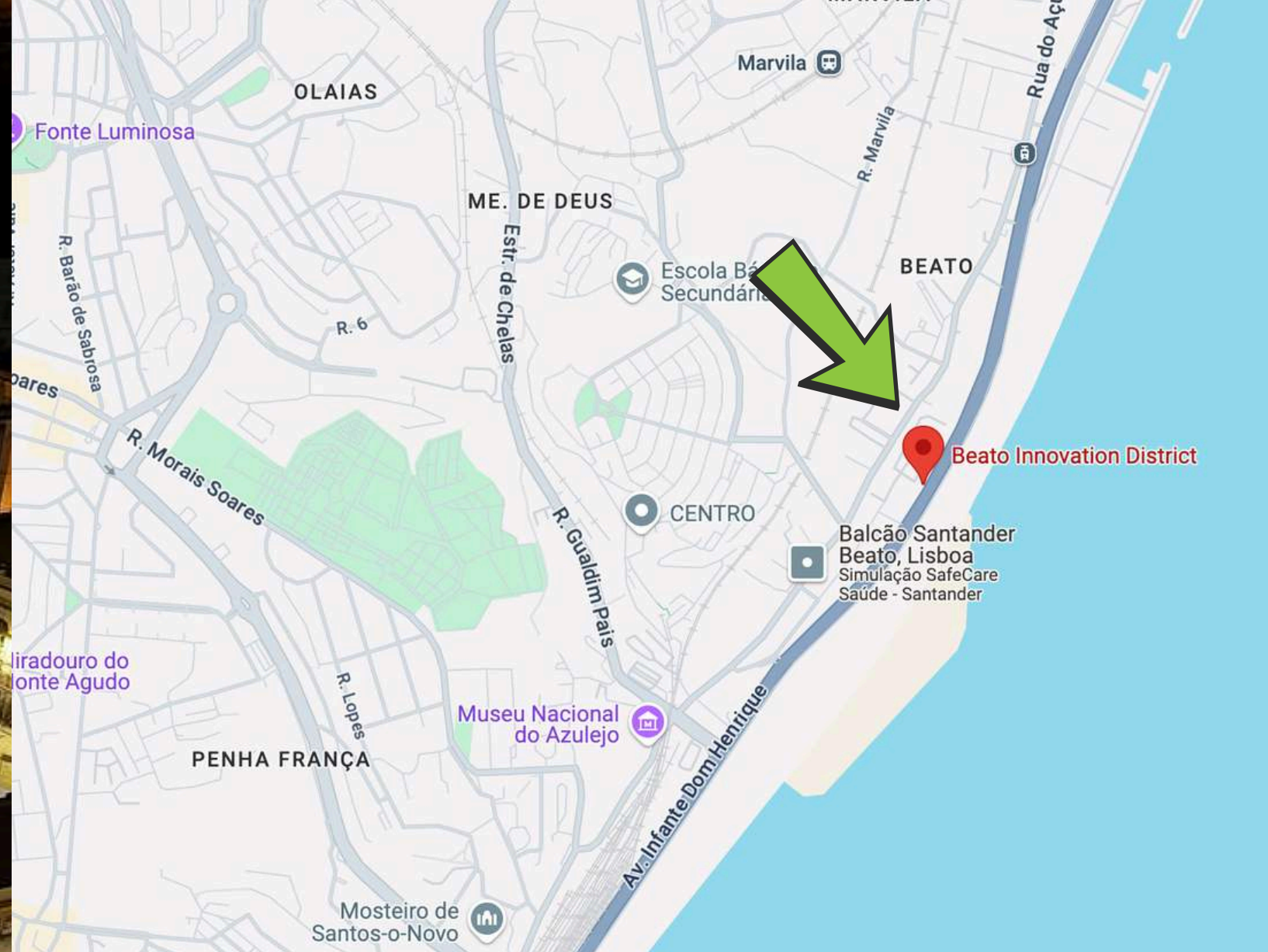
At our venues, we believe that the right environment can spark innovation and foster collaboration. Our spaces are designed to inspire creativity, bring people together, and fuel groundbreaking ideas in the fields of technology and beyond.

LISBON – BEATO INNOVATION DISTRICT

A vibrant, restored factory complex that merges innovation, technology, and culture. With stunning views of the Tagus River and the Beato area, this space fosters creativity and collaboration in the heart of Lisbon's rising tech scene.

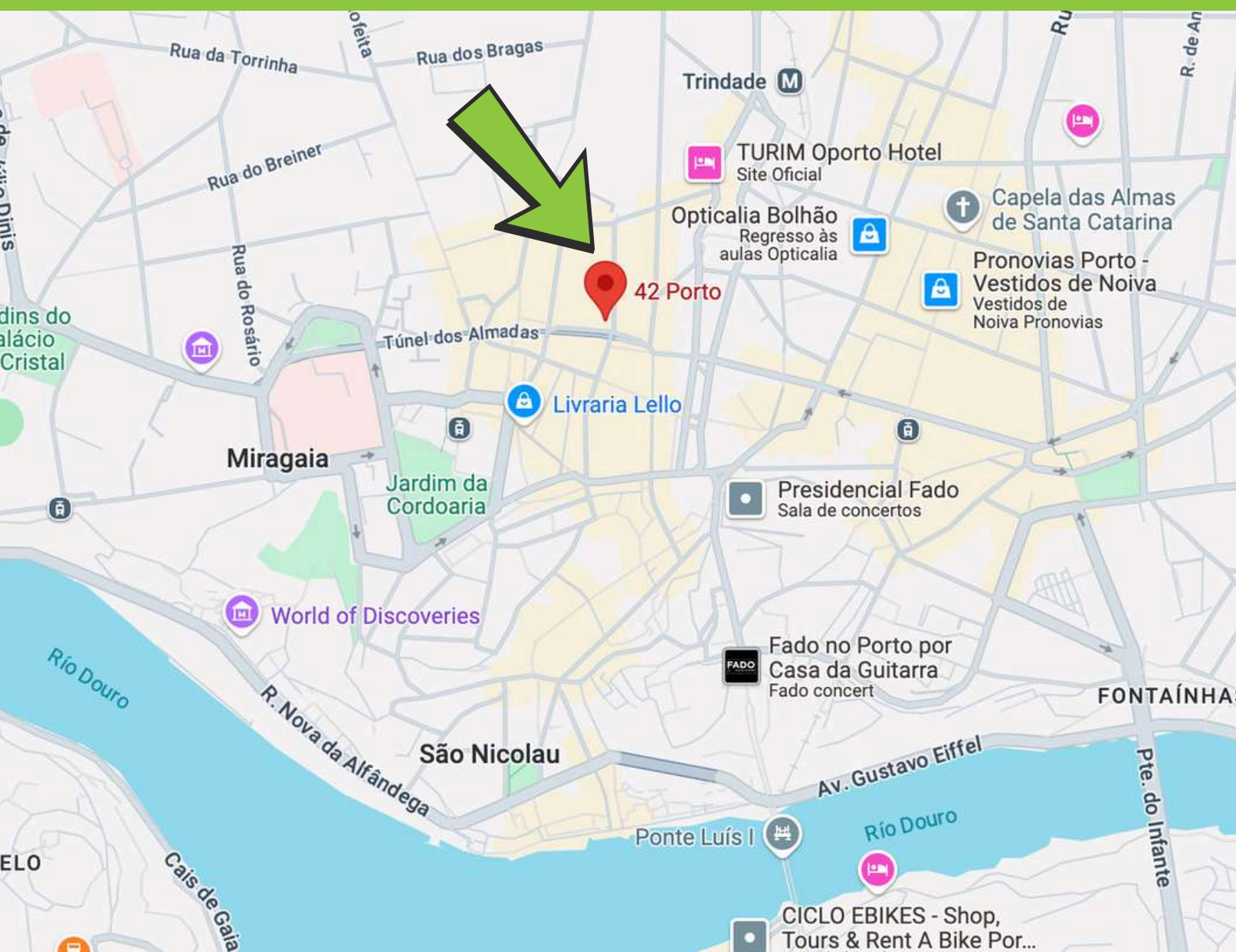
PORTO – RUA DA PICARIA

Centrally located in the historic heart of Porto, this venue blends the charm of the city with modern amenities. Perfect for intimate gatherings, corporate events, or workshops, offering easy access to Porto's cultural and historical landmarks.



BEATO INNOVATION DISTRICT

RUA DA PICARIA PORTO CITY CENTER





TUMO LISBOA

TUMO Lisboa merges creativity with technology in a sleek, modern space. Ideal for workshops, design-thinking sessions, and tech expos, it fosters out-of-the-box thinking. Located in a leading innovation hub, it provides the perfect setting for forward-thinking events, encouraging collaboration and exploration.



42 LISBOA

42 Lisboa is where innovation meets collaboration. With flexible, tech-driven spaces designed for hackathons, workshops, and conferences, it's the perfect venue to inspire creativity and foster networking. Located in the Beato neighbourhood, it offers a dynamic environment to bring ideas to life and connect with a vibrant community.



42 PORTO

42 Porto offers a perfect blend of modern technology and rich cultural heritage. Its state-of-the-art facilities are ideal for hackathons, industry meetups, and workshops. Centrally located in Porto, the venue provides an inspiring atmosphere where innovation and tradition combine seamlessly.

SPACES FOR INNOVATION AND CREATIVITY

The Perfect Venues for Your Next Event



TUMO LISBOA

Amphitheater // Lounge // Workshop Rooms // Meeting Rooms // Pantry



TUMO FACILITIES
FLEXIBLE SPACES,
TAILORED TO YOUR EVENT.

AMPHITHEATER

Our Amphitheater is an ideal space for **different talk formats**, designed to inspire **creativity and engagement**. It is equipped with an **85" large-screen TV** and a **complete sound system** with amplifier and microphone (wired).

LOUNGE

A **versatile space** that can be used with its original setup, featuring **bean bags and cubes**, or rearranged with **tables for more formal events**. Includes an **85" large-screen TV** and a **complete sound system** with amplifier and microphone (wired).

WORKSHOP 1, 2, 4 & 5

The Workshop rooms are equipped with the **latest iMacs, inspiring creativity and innovation** in every session.

WORKSHOP 6

It is ideal for **larger workshops or meetings**, equipped with a TV and electrical outlets, allowing all participants to connect their laptops.

MEETING ROOMS

They are **flexible spaces** that can **adapt to different needs** and have previously served as **dressing rooms, staff support**, or even **game rooms**.

MUSIC STUDIO

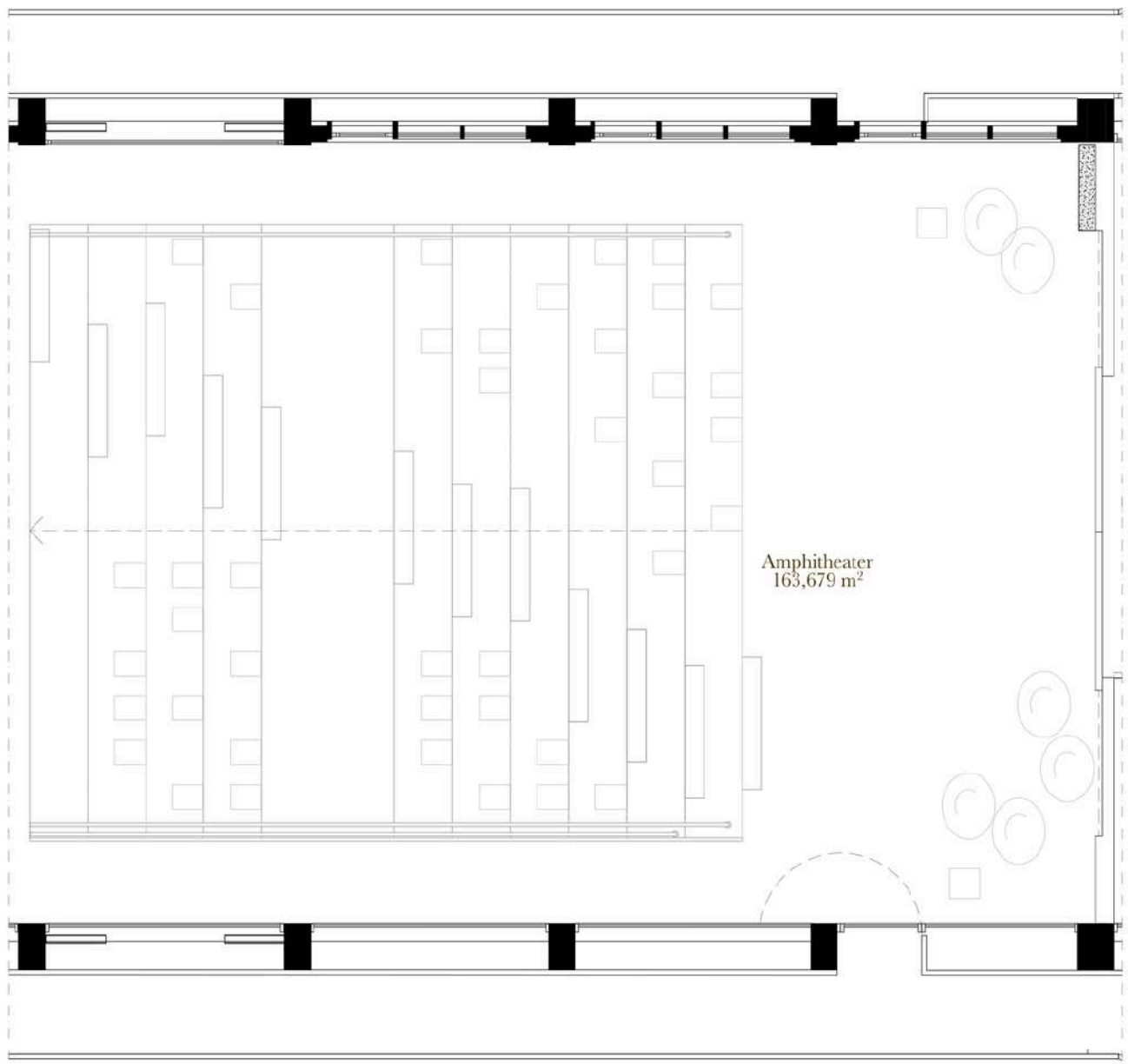
Our studio was designed with **top practices** to ensure an **exceptional sound experience** and is equipped with **leading musical instruments**.

PANTRY

The Pantry offers all the **necessary conditions for catering work** or even as a place for meals to be served.

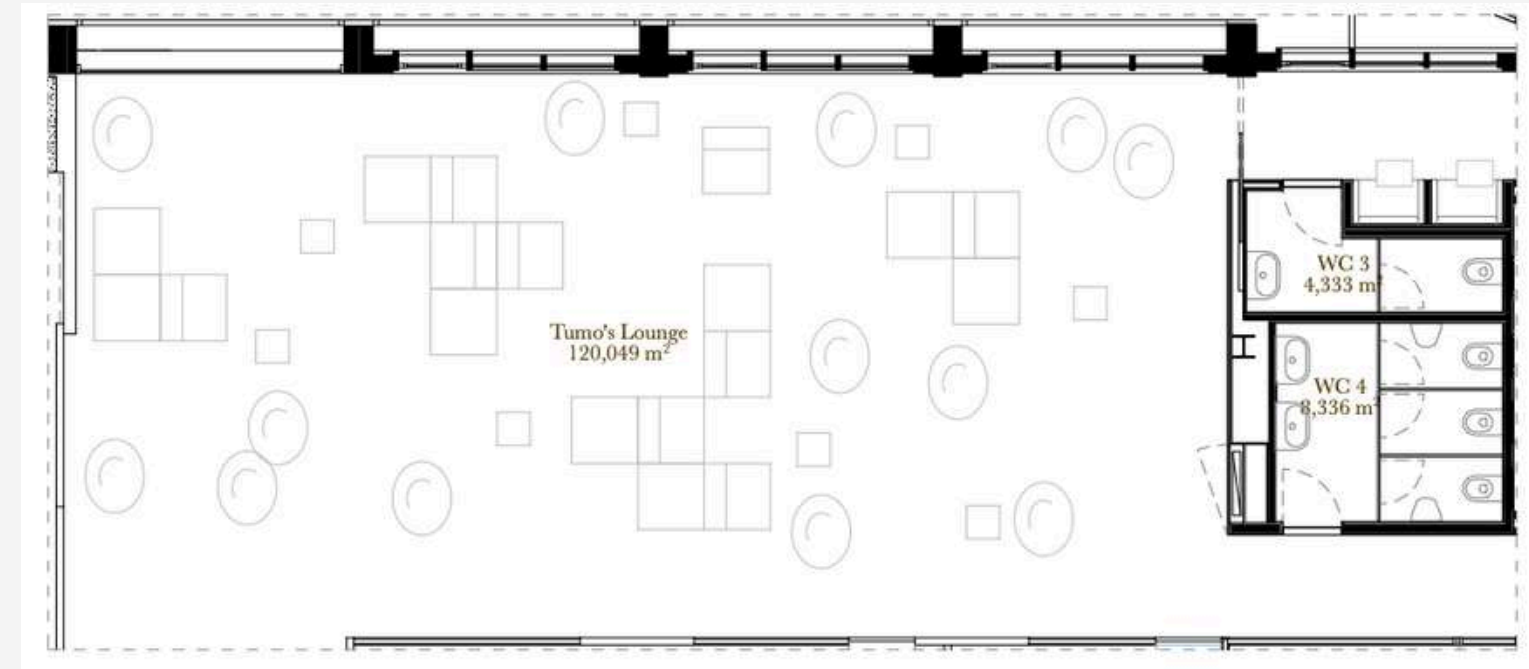
AMPHITHEATER

Max. Capacity: 120 pax

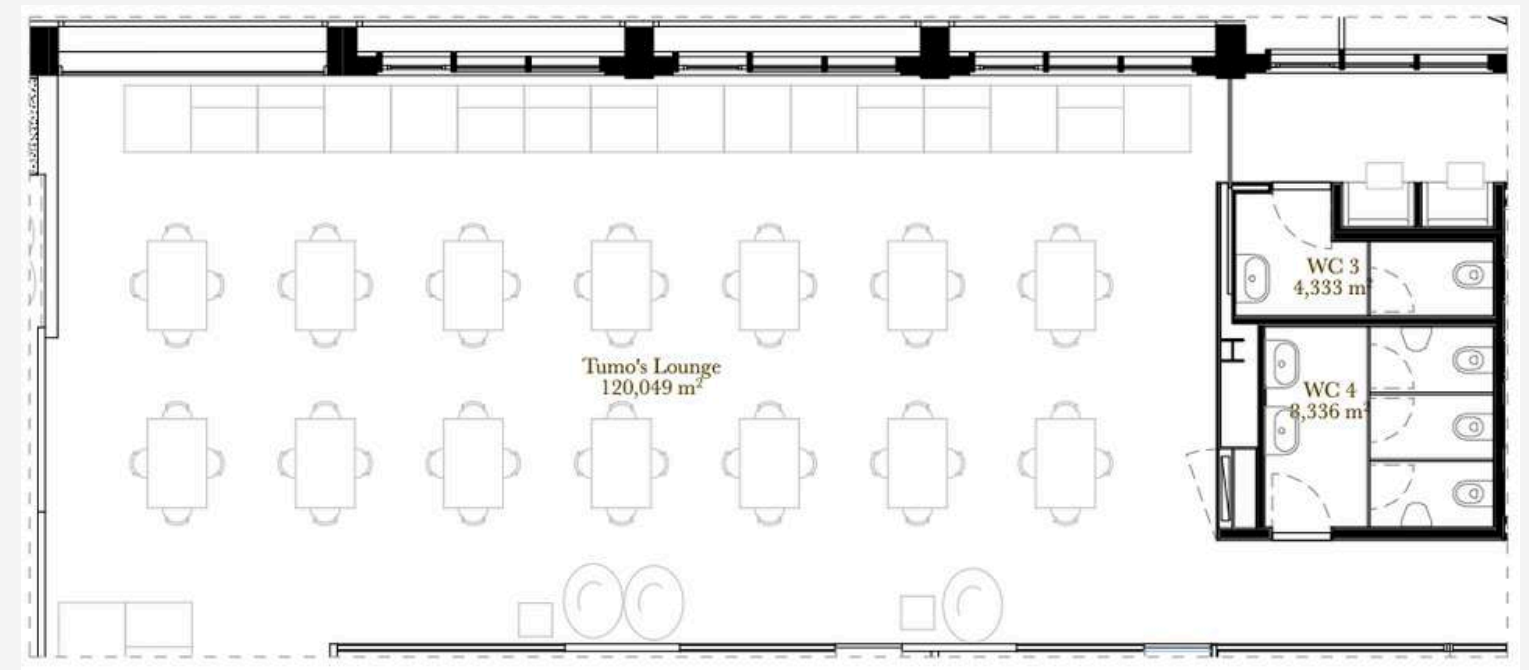


LOUNGE

Max. Capacity: 100 pax

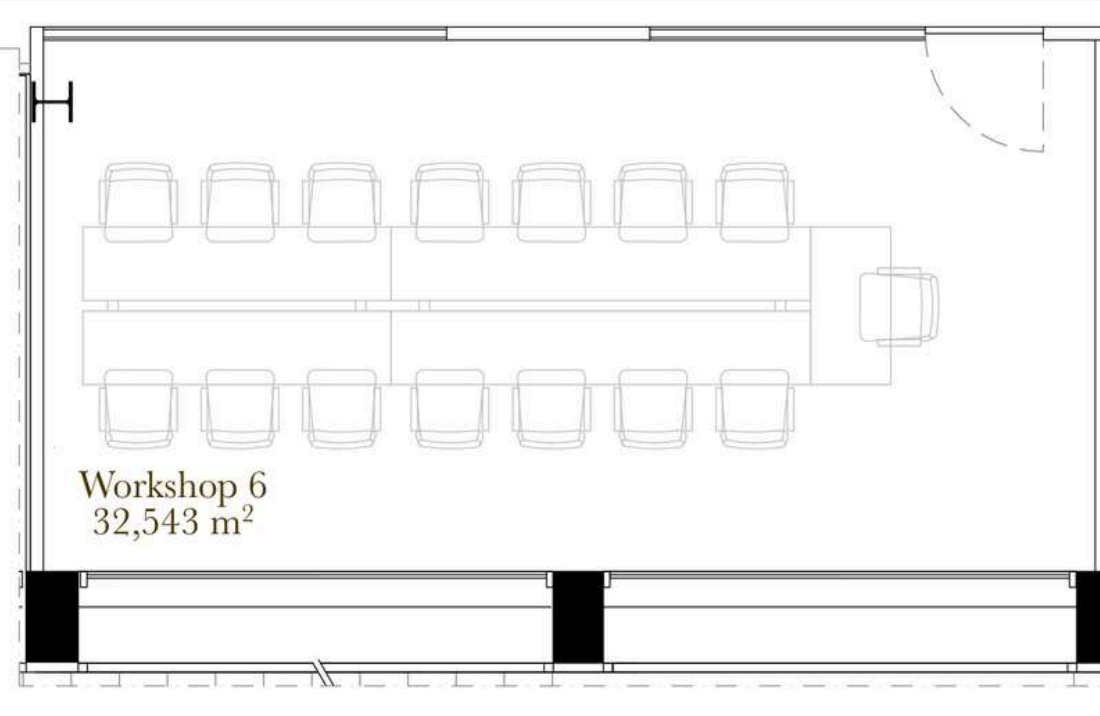
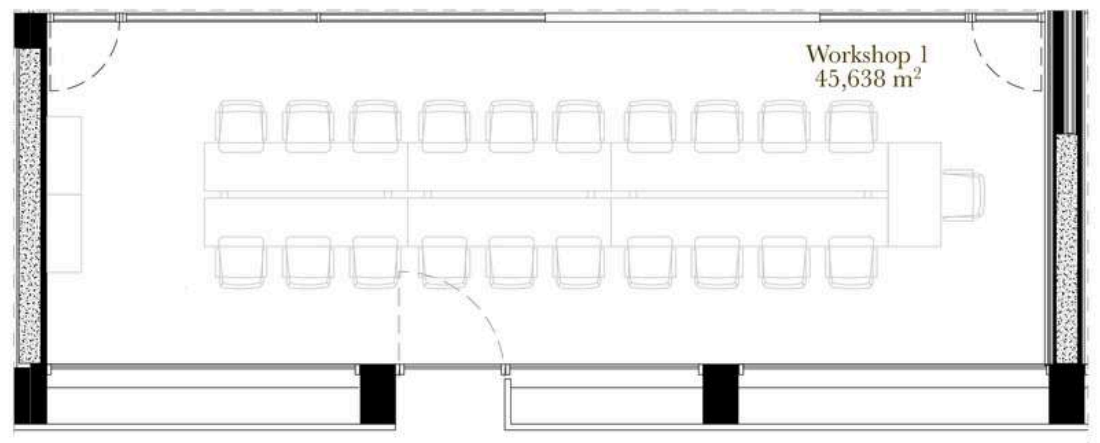
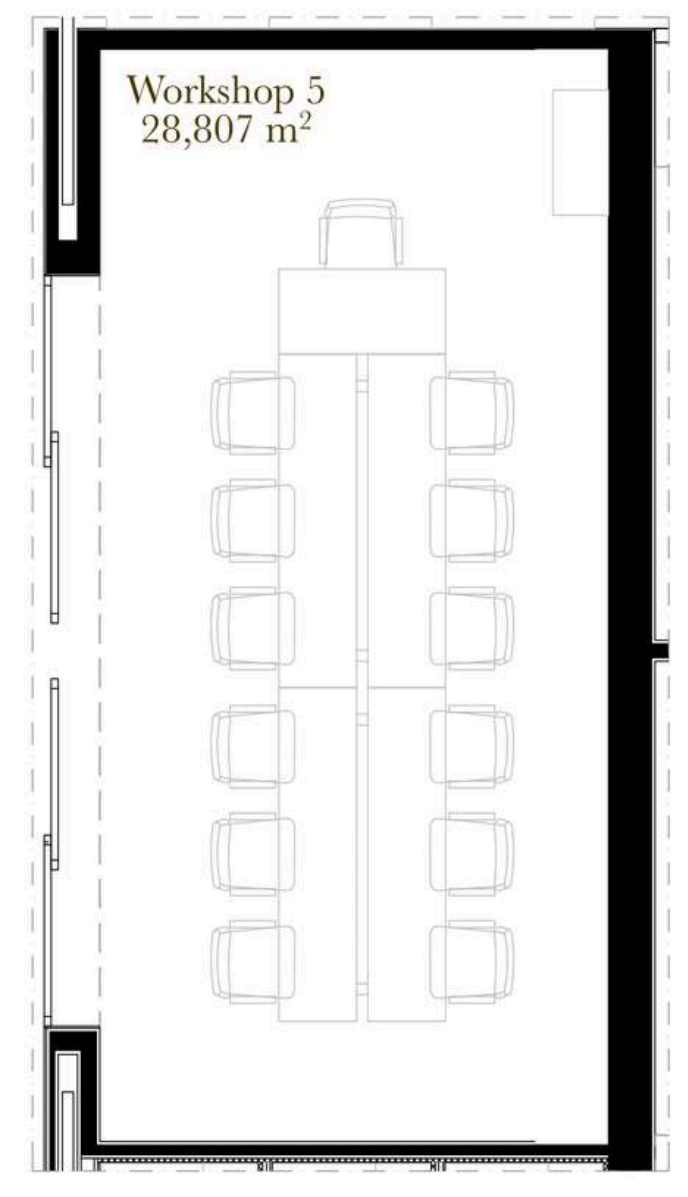


Bean Bags



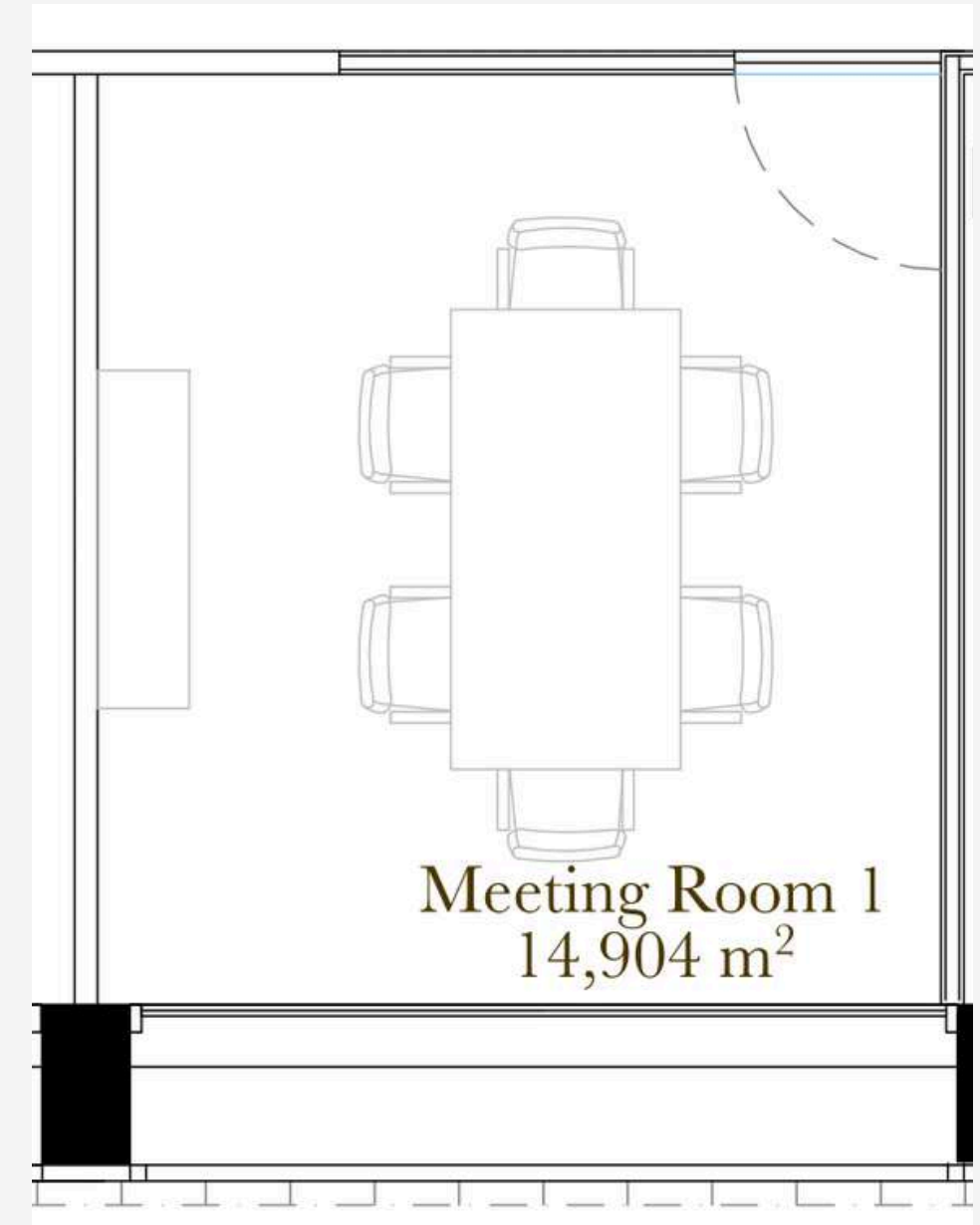
Tables & chairs

WORKSHOP ROOMS



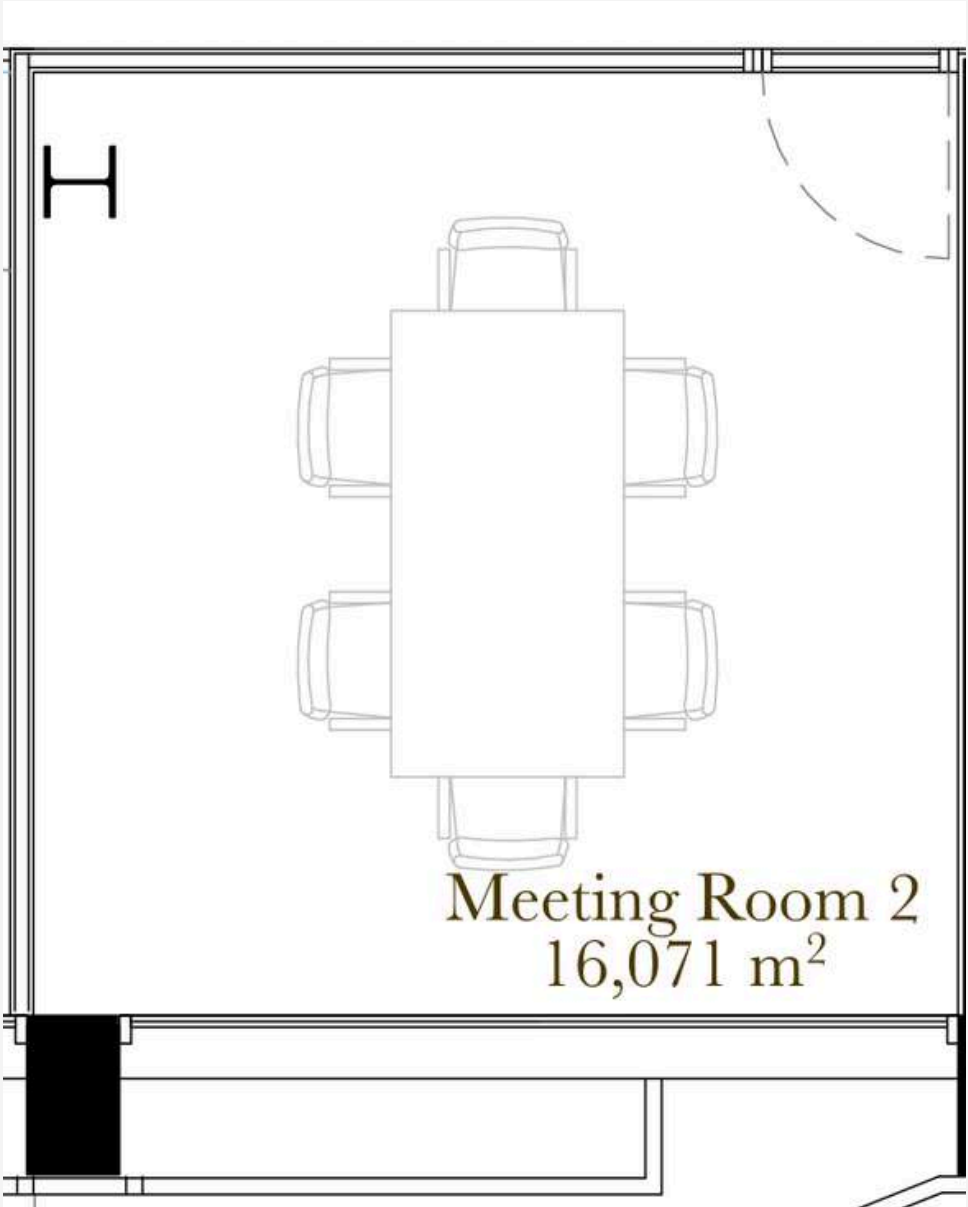
MEETING ROOM 1

Max. Capacity: 8 pax



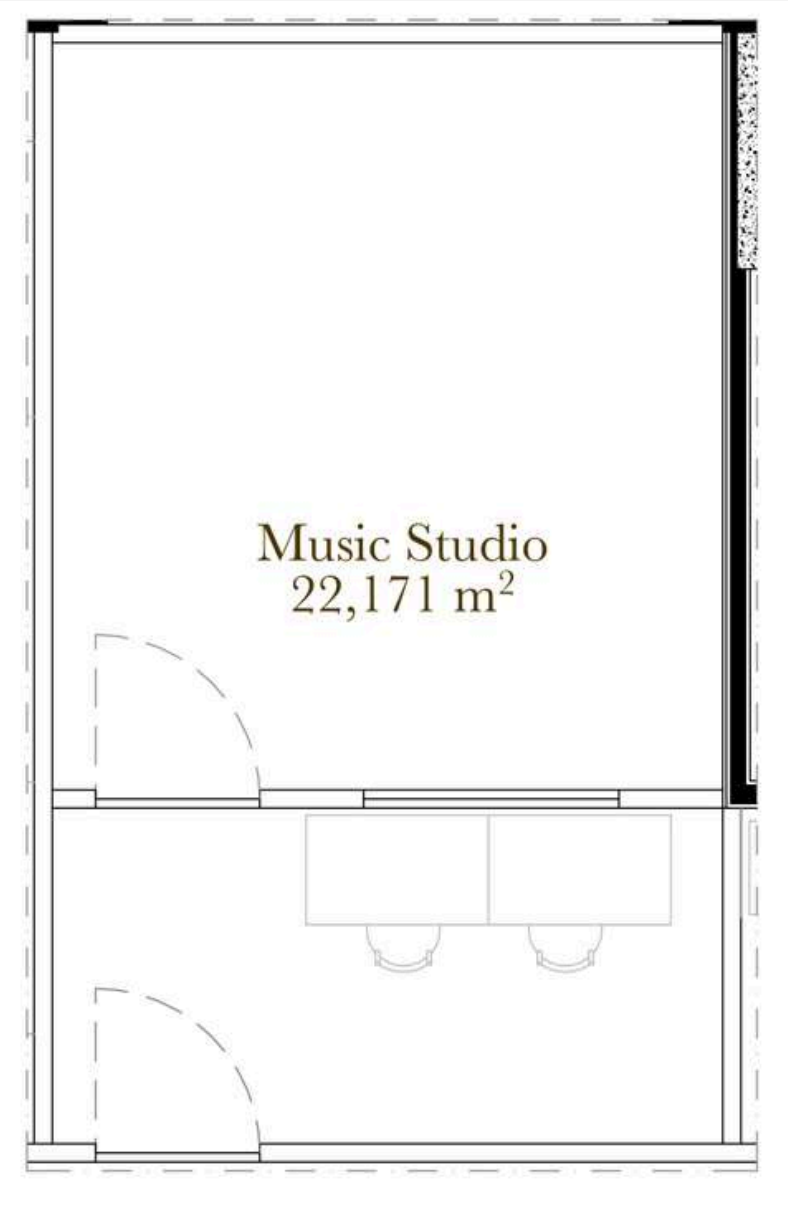
MEETING ROOM 2

Max. Capacity: 8 pax



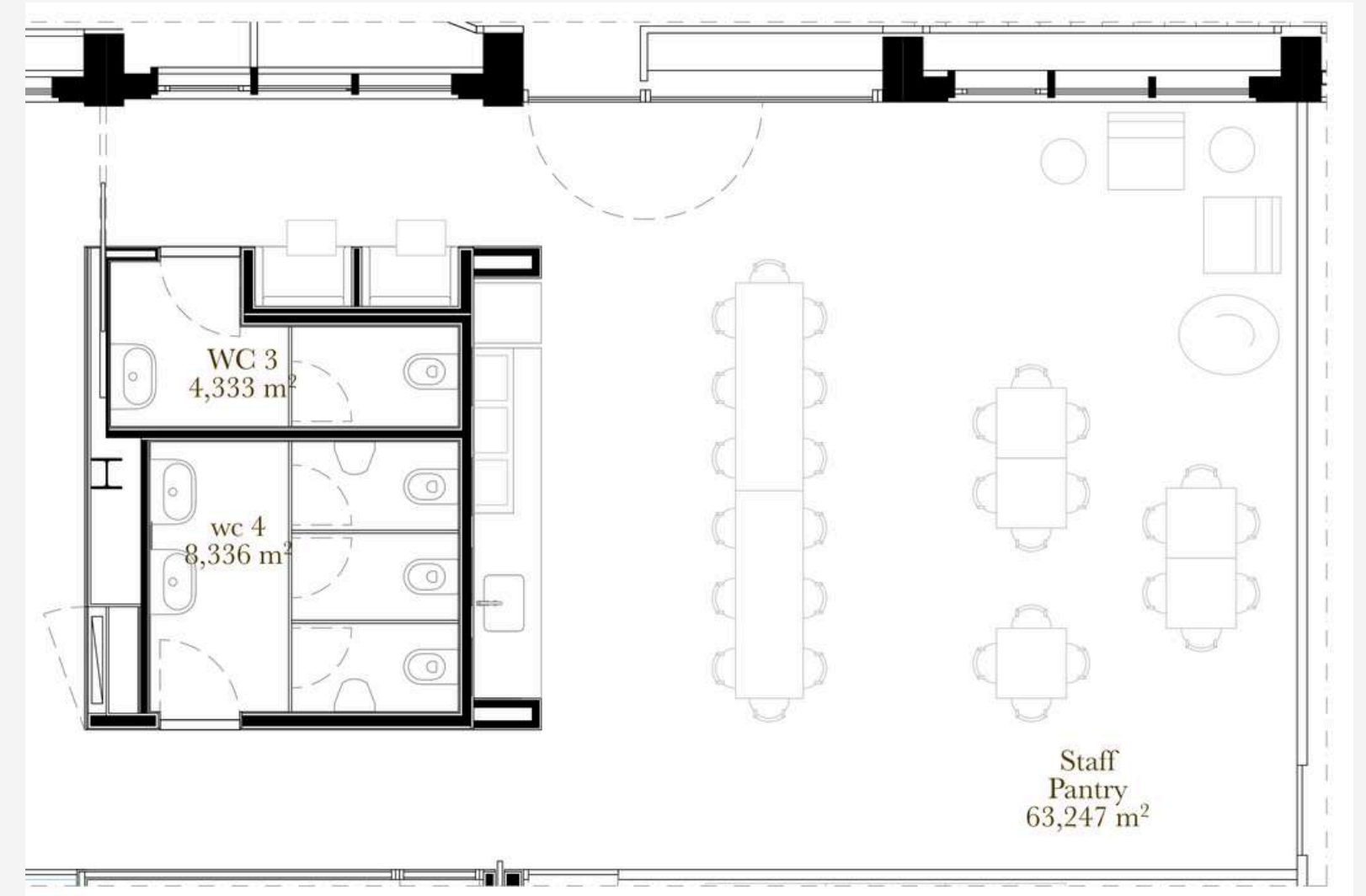
MUSIC STUDIO

Max. Capacity: TBC



PANTRY

Max. Capacity: 32



42 LISBOA

Lounge // Cluster 1 & 2



42 LISBOA FACILITIES

**A PLACE THAT BREATHES
INNOVATION AND
DISRUPTION.**

LOUNGE

A **versatile space**, the lounge is furnished with bean bags and can easily accommodate chairs and even tables **to suit different event formats**. It is equipped with a **3 x 2.5m LED wall**, a **sound system**, and a **grand piano**, adding a touch of elegance to the room.

CLUSTER 1 & CLUSTER 2

Details upon request

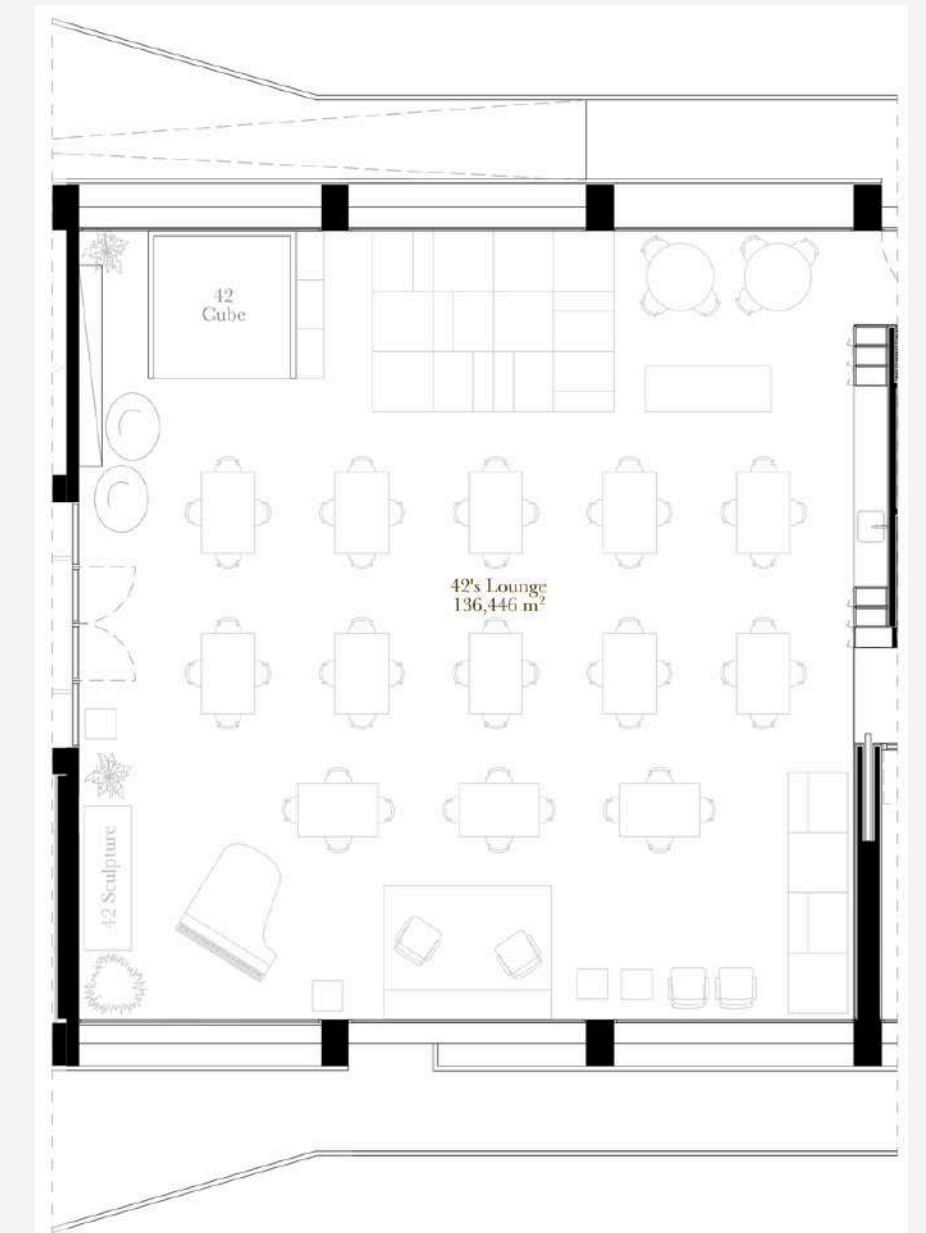
A **cutting-edge cluster** equipped with **over 100 27" iMacs**, making it the **perfect setup for a wide variety of events**. The same applies to **Cluster 2**, which features **Dell PCs**. Contact us to **explore the possibilities** these spaces can offer.

LOUNGE

Max. Capacity: 100



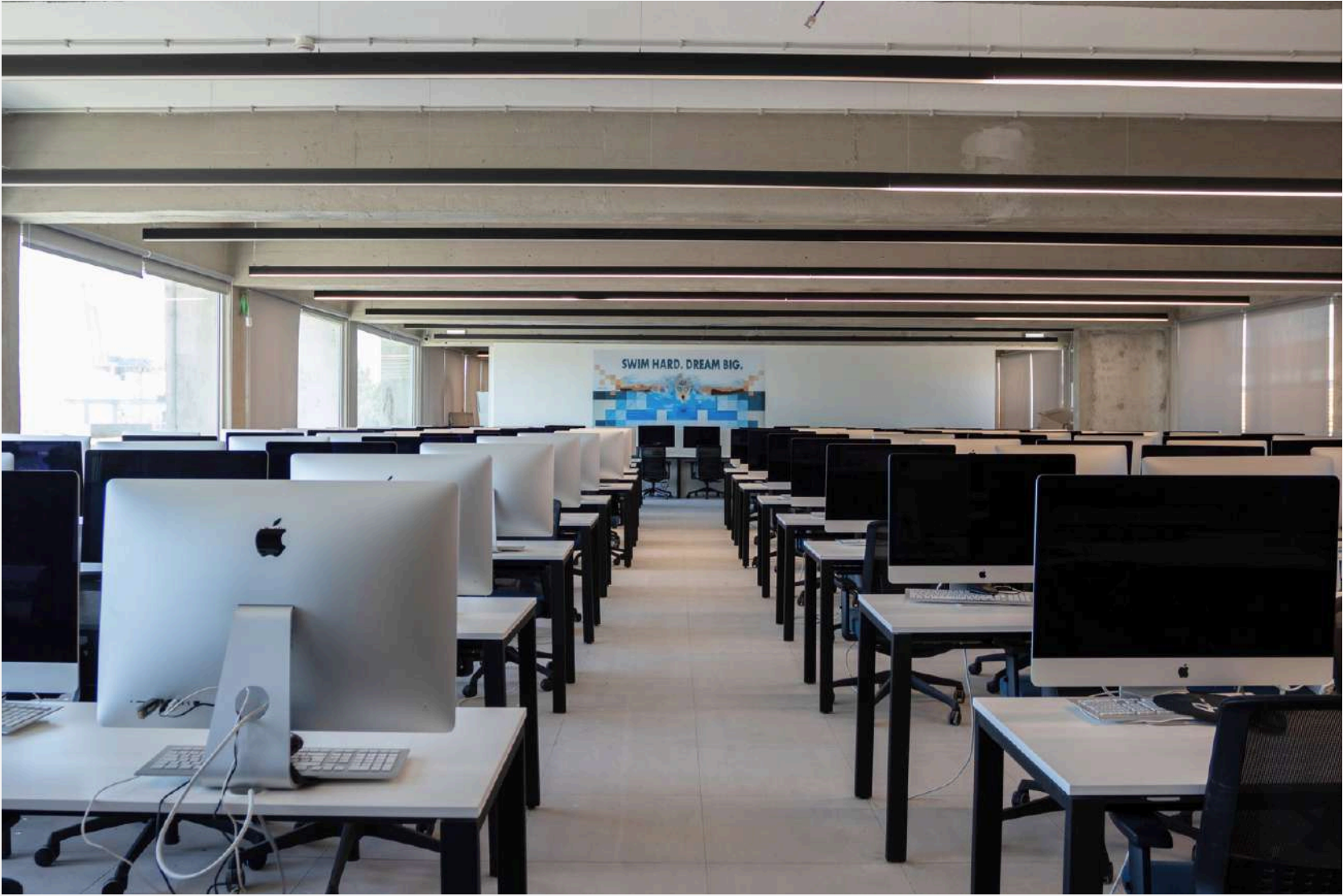
Bean Bags



Tables & chairs

CLUSTERS 1 & 2

Details upon request





42 PORTO

Lounge // Workshop Room // Meeting Room // Cluster 1 & 2



**42 PORTO FACILITIES
INNOVATION AT THE
HEART OF PORTO'S
HISTORIC CENTER.**

LOUNGE

Located on the 3rd floor, the Lounge offers a **cozy and versatile space** that adapts to **your event's needs**. The inviting bean bags create a welcoming atmosphere. The layout can **easily be transformed** with chairs and tables **to suit more formal gatherings**. Features an 85" large-screen TV and a comprehensive sound system with an amplifier and wired microphone.

WORKSHOP ROOM

It is the **ideal space** for **workshops and team-building activities**. With tables and chairs available, the room can be **arranged to suit different event needs**. Centrally located in Porto, this **spacious venue** might be just what you're looking for. Includes an 85" large-screen TV and a complete audio setup, with an amplifier and a wired microphone.

MEETING ROOM

Our Meeting Room is perfect for an **exclusive group conference**. It offers **privacy and all the necessary equipment** to meet with teams in comfort.

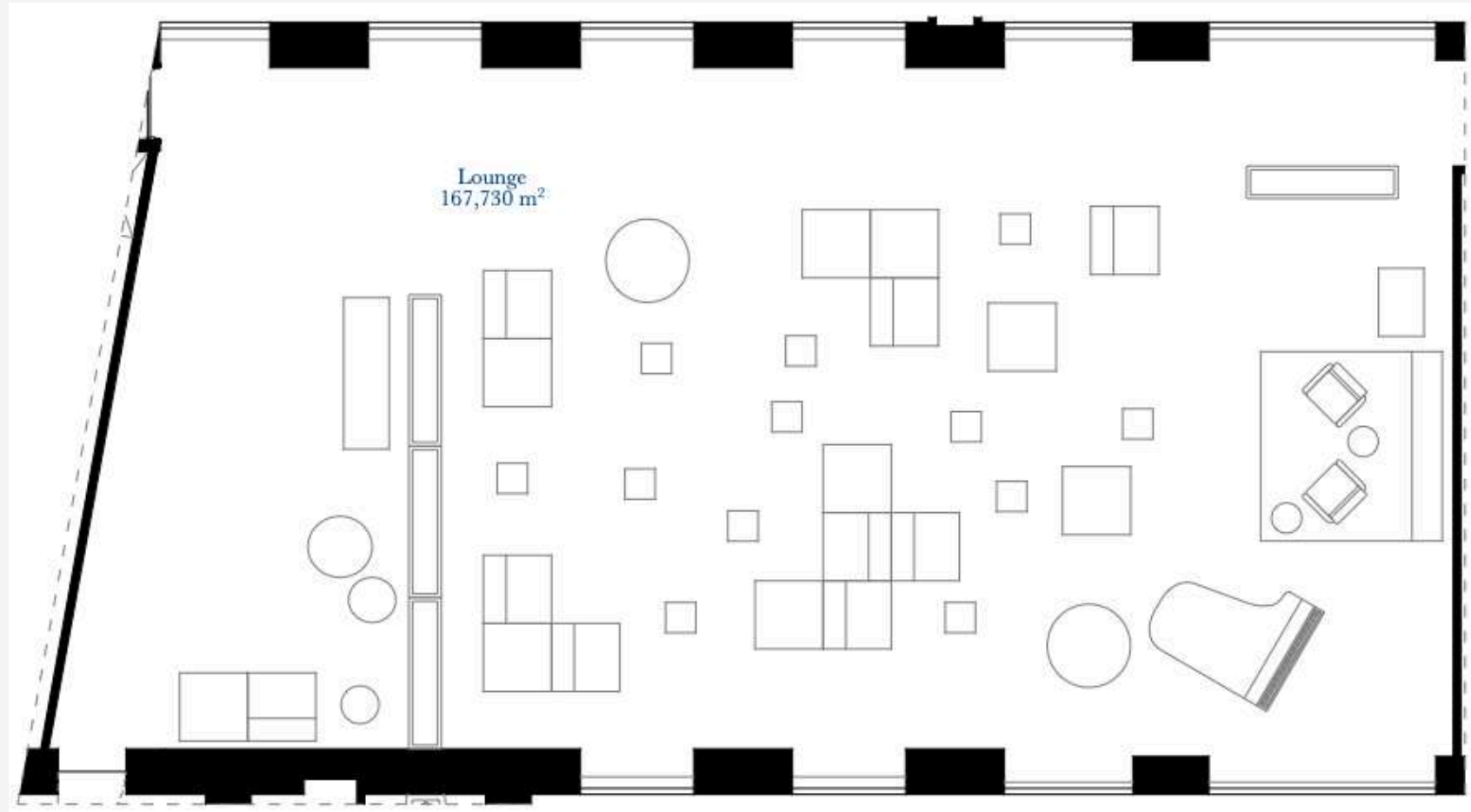
CLUSTER 1 & CLUSTER 2

Details upon request

Cluster 1 and **Cluster 2** are high-tech clusters **equipped with over 100 Dell PCs**, offering flexibility for a wide range of activities. Contact us to explore all possibilities.

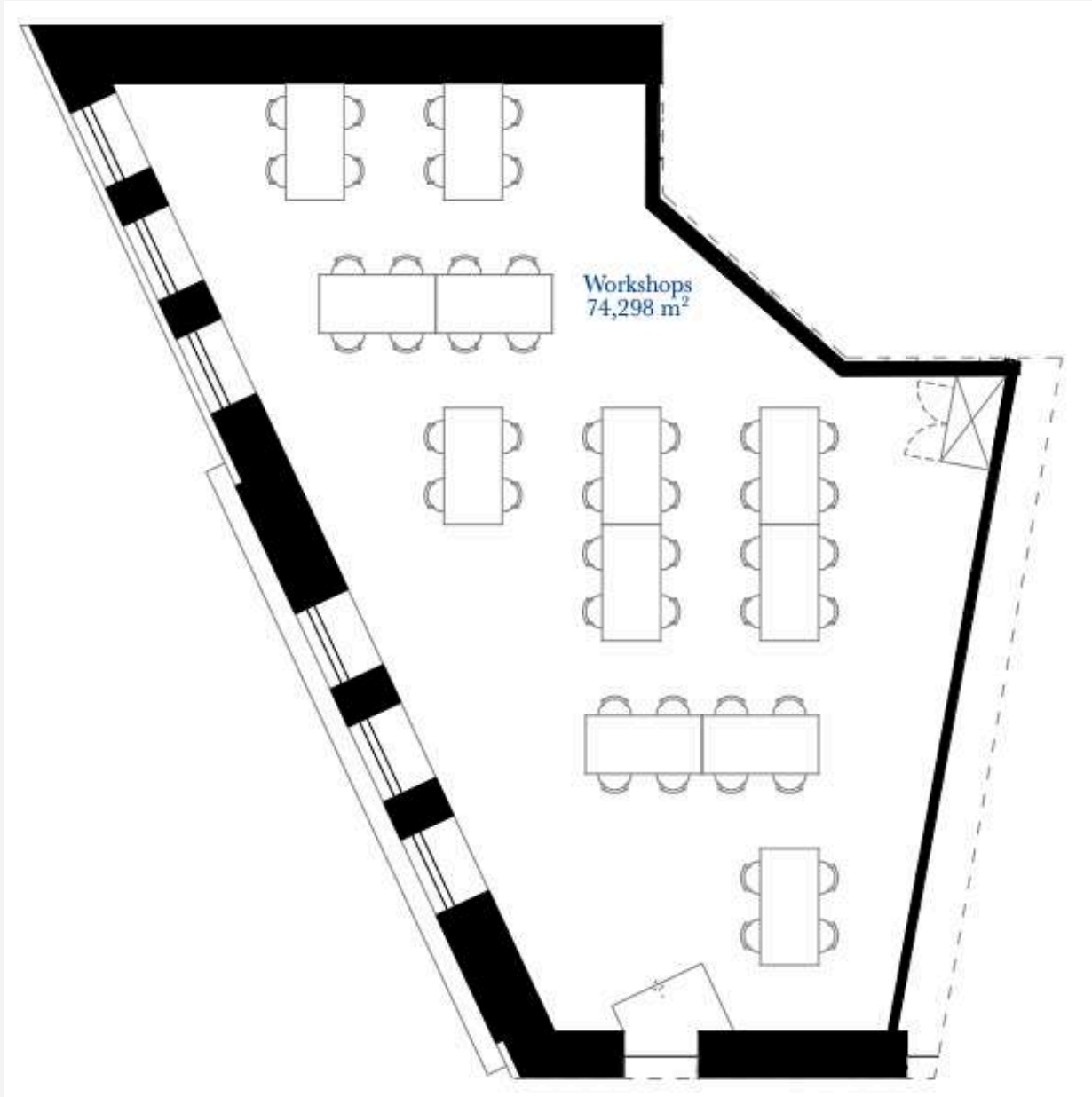
LOUNGE

Max. Capacity: 80



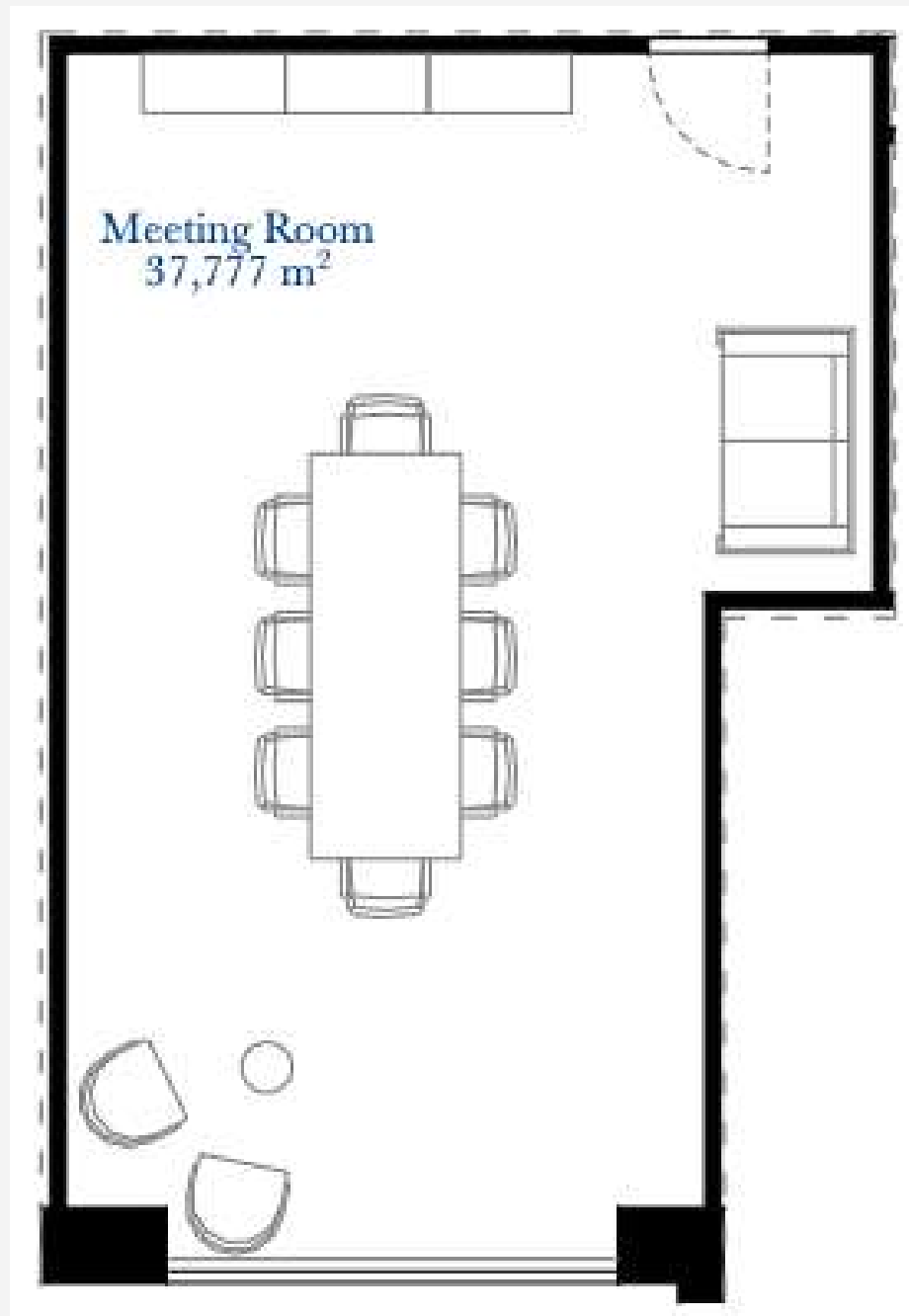
WORKSHOP ROOM

Max. Capacity: 80



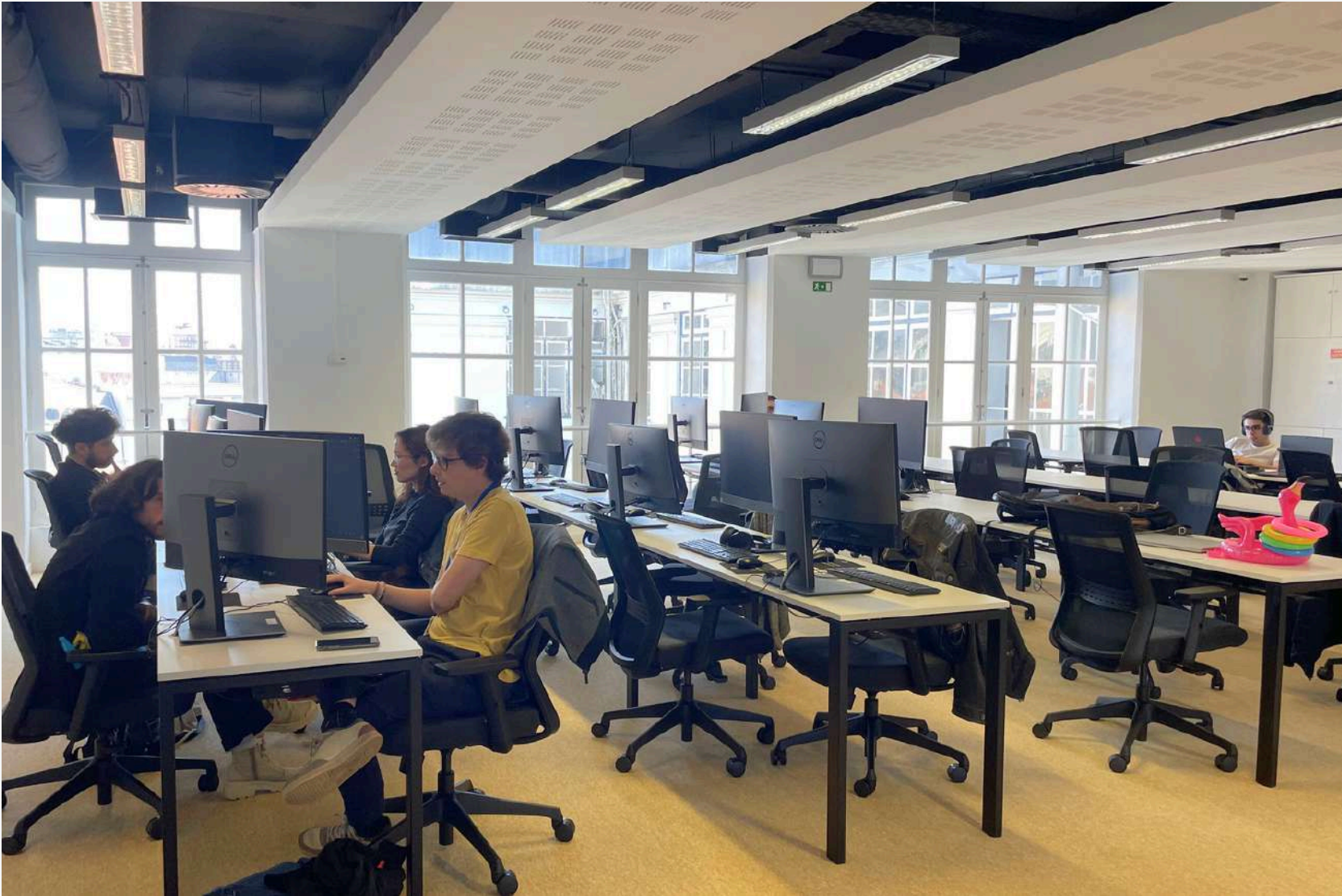
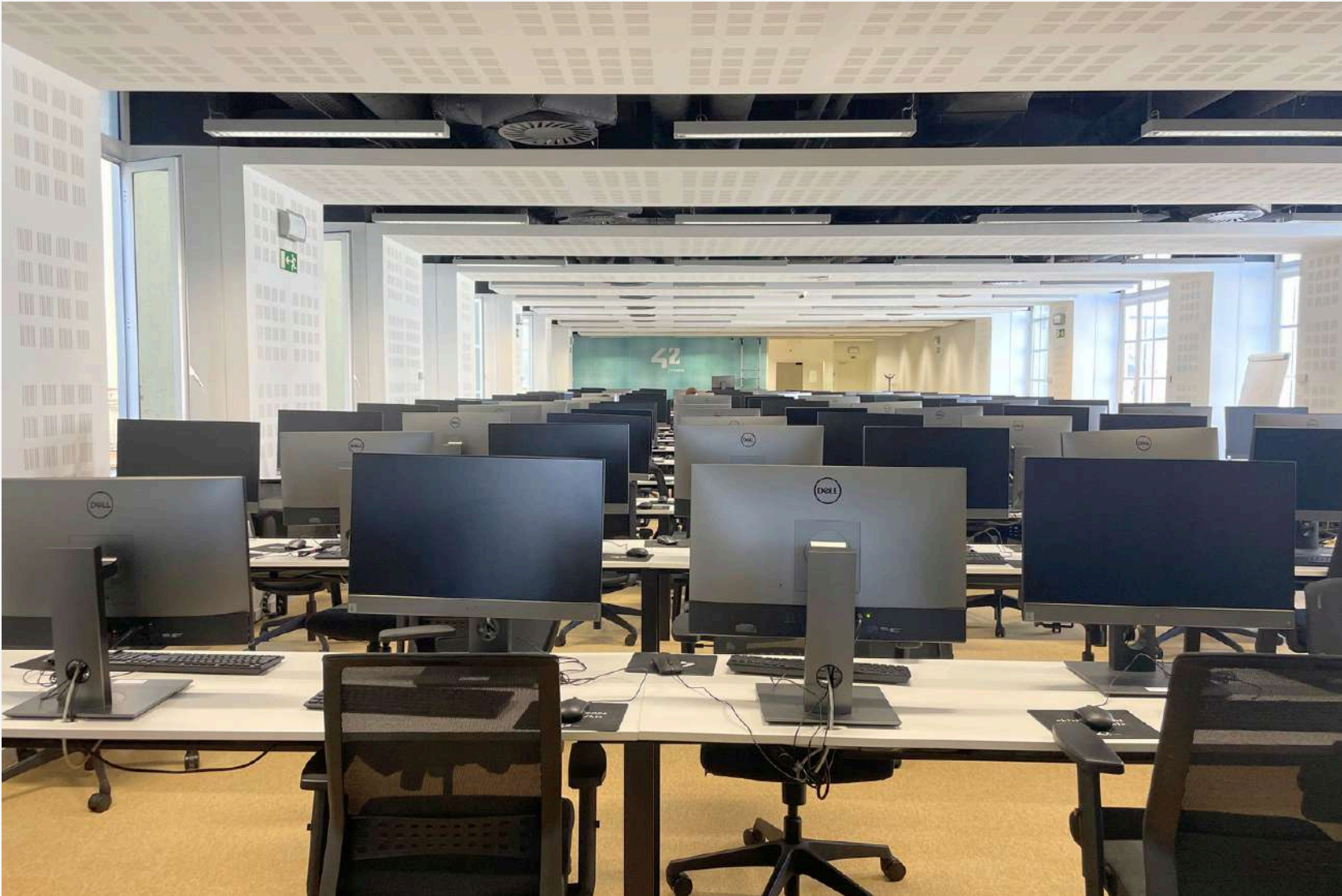
MEETING ROOM

Max. Capacity: 12



CLUSTERS 1 & 2

Details upon request





CREATE, CONNECT, AND INNOVATE IN SPACES DESIGNED FOR INSPIRATION AND COLLABORATION

REACH OUT TO US

TUMO // Rental Spaces: admin@tumo.pt

42 Lisboa e Porto // Rental Spaces: admin@42portugal.pt

**Shaken.
not stirred**

42 PORTUGAL

TUM@PORTUGAL